

Approval, Quality Report (AQR)

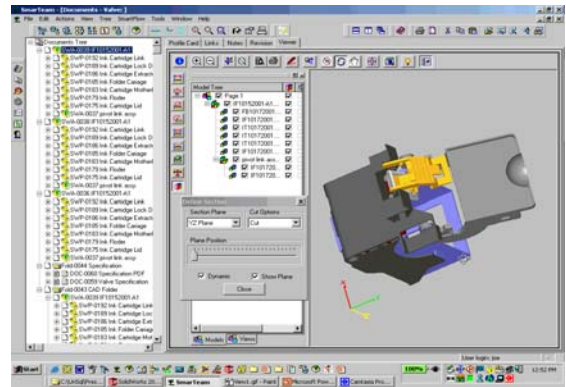
AQR is For: Automotive product businesses who need to manage their data and organisations in a structured, disciplined manner

Who Needs it: Control within the data-flow to the authorities, laboratories, customers, partners and/or suppliers. Through standard package in relation to business process management (conformity of production/conformity of product - COP)

AQR is: Preconfigured SMARTEAM data management for the complete Vehicles as well as single Vehicle parts and/or Automotive electronic.

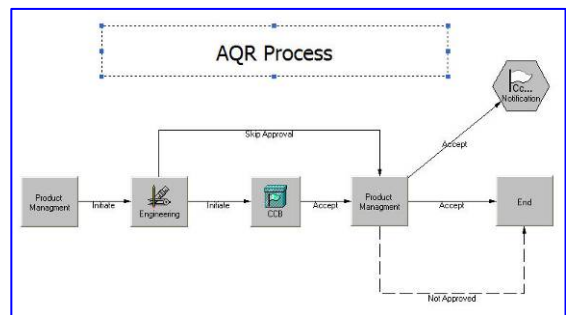
That provides:

- Automation of business processes through preconfigured templates
- Strengthened internal and external collaboration
- Control product data, Querying and reporting for approval and quality inspections.
- The possibility to secure and standardize the Workflow through the document management processes



The preconfigured workflow is designed to manage the disciplines within:

- Internal Release
- Approvals and COC/COP documentation
- Document Management
- Control of Non-Conformance
- Corrective Action Report
- Product Design and Analysis Flow
- Design & Development Change
- Problem Report and Engineering Change
- Additional Task Management
- Creation of Approval Class Structure
- Creation of Document Class Structure



Idé-Pro Engineering & Software A/S:

We assist our customers in solving their technical- and administrative engineering challenges:

- Sales and implementation of Data Management and Engineering Software Solutions, with emphasis on PLM/PDM, Quality Compliance, CAD, CAM, FEM, MBS and CAE, focussing on products from Dassault Systemès.
- Assistance to product development, design, construction, analysis, optimization, and the practical realisation of development and manufacturing projects.
- Our customer base covers a wide range of Denmark's leading companies in design, shaping, electronics, machinery, automotive, aerospace and defence. We are a company in the Idé-Pro Skive group – The leading North European supplier of tooling and injection moulded parts – focusing on prototypes, small- and medium series production.

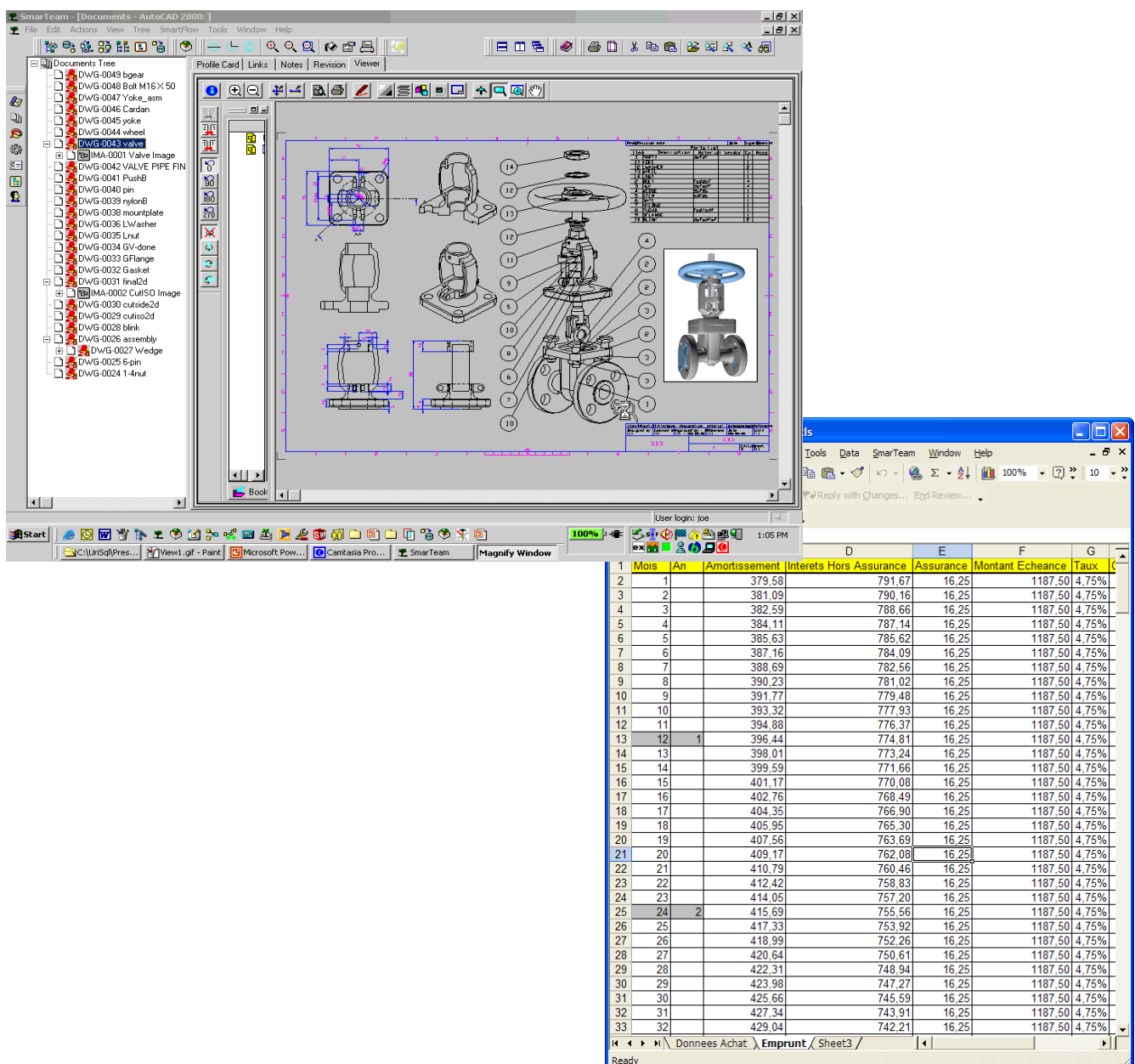
Approval, Quality Report (AQR)

AQR provides automotive suppliers with a specific, industry related, preconfigured SMARTEAM environment to enable and streamline key business processes and to capture paper based forms in an electronic format.

AQR provides Automotive suppliers with change management controls to illustrate compliance with key industry standards.

AQR provides a structure that relates to the approval and requirements system, against which product data is associated allowing the business to quickly find the latest relevant information.

AQR allows Automotive suppliers to structure, document, track and automate the who, what, where, why and how, and report/verifying the conformity of product and production.



The screenshot displays the SmarTeam software interface. The main window shows a CAD drawing of a valve assembly with various components labeled with numbers (1-14). A 'Documents Tree' on the left lists various DWG files, including 'DWG-0048 Bolt M16 X 50', 'DWG-0046 Cardan', 'DWG-0045 yoke', 'DWG-0044 wheel', 'DWG-0043 Valve Image', 'DWG-0042 VALVE PIPE FIN', 'DWG-0041 PushB', 'DWG-0040 pin', 'DWG-0039 nylonB', 'DWG-0038 mountplate', 'DWG-0036 LWasher', 'DWG-0035 Lnut', 'DWG-0034 GV-done', 'DWG-0033 GFlange', 'DWG-0032 Gasket', 'DWG-0031 final2d', 'IMA-0002 CutISO image', 'DWG-0030 cutiso2d', 'DWG-0029 cutiso2d', 'DWG-0028 blink', 'DWG-0026 assembly', 'DWG-0027 Wedge', 'DWG-0025 6-pin', and 'DWG-0024 1-4nut'. A 'Profile Card' is visible on the right side of the CAD window.

Overlaid on the bottom right is a financial spreadsheet with the following data:

	Mors	An	Amortissement	Interets	Hors Assurance	Assurance	Montant Echeance	Taux
2	1		379.58		791.67	16.25	1187.50	4.75%
3	2		381.09		790.16	16.25	1187.50	4.75%
4	3		382.59		788.66	16.25	1187.50	4.75%
5	4		384.11		787.14	16.25	1187.50	4.75%
6	5		385.63		785.62	16.25	1187.50	4.75%
7	6		387.16		784.09	16.25	1187.50	4.75%
8	7		388.69		782.56	16.25	1187.50	4.75%
9	8		390.23		781.02	16.25	1187.50	4.75%
10	9		391.77		779.48	16.25	1187.50	4.75%
11	10		393.32		777.93	16.25	1187.50	4.75%
12	11		394.88		776.37	16.25	1187.50	4.75%
13	12	1	396.44		774.81	16.25	1187.50	4.75%
14	13		398.01		773.24	16.25	1187.50	4.75%
15	14		399.59		771.66	16.25	1187.50	4.75%
16	15		401.17		770.08	16.25	1187.50	4.75%
17	16		402.76		768.49	16.25	1187.50	4.75%
18	17		404.35		766.90	16.25	1187.50	4.75%
19	18		405.95		765.30	16.25	1187.50	4.75%
20	19		407.56		763.69	16.25	1187.50	4.75%
21	20		409.17		762.08	16.25	1187.50	4.75%
22	21		410.79		760.46	16.25	1187.50	4.75%
23	22		412.42		758.83	16.25	1187.50	4.75%
24	23		414.05		757.20	16.25	1187.50	4.75%
25	24	2	415.69		755.56	16.25	1187.50	4.75%
26	25		417.33		753.92	16.25	1187.50	4.75%
27	26		418.99		752.26	16.25	1187.50	4.75%
28	27		420.64		750.61	16.25	1187.50	4.75%
29	28		422.31		748.94	16.25	1187.50	4.75%
30	29		423.98		747.27	16.25	1187.50	4.75%
31	30		425.66		745.59	16.25	1187.50	4.75%
32	31		427.34		743.91	16.25	1187.50	4.75%
33	32		429.04		742.21	16.25	1187.50	4.75%